



2141 ICON Way, Vacaville, CA 95688 - Tel: 707.564.4000 – www.iconaircraft.com

SAFETY DIRECTIVE/ALERT

SD-101722-A

ID NUMBER & REVISION: SD-101722-A
SUBJECT: Rudder Pedal Bracket Installation
RELEASE DATE: 28 November 2022
EFFECTIVE DATE: 28 November 2022
SUPERSEDES NOTICE: N/A
AIRCRAFT AFFECTED: **MAKE & MODEL:** ICON A5
SERIAL NUMBERS: 00126-00133, 00135, 00139, 00142-00146, 00148-00150, 00152-00156, 00158-00159, 00161
REQUIRED ACTION: Pilot and Copilot rudder pedal assemblies need to be inspected for proper bushing installation.
TIME OF COMPLIANCE: At the next service interval
REVISION HISTORY: A Initial Release

LEVEL OF CERTIFICATION	<input type="checkbox"/> Pilot/Owner	<input checked="" type="checkbox"/> A & P
REQUIRED (any level checked can perform task):	<input type="checkbox"/> LSA Repairman – Inspection**	<input checked="" type="checkbox"/> Certified Repair Station
	<input checked="" type="checkbox"/> LSA Repairman – Maintenance	<input checked="" type="checkbox"/> Manufacturer

PURPOSE:

ICON Aircraft was made aware of a loose rudder pedal assembly on the pilot side of the ICON A5 resulting in excessive side-to-side movement of both the left and right rudder pedals. After investigation, it was observed that, while the side plate bushings were properly installed, the side plate and bushing assembly was in the improper location, causing a lack of support of the rudder pedals arms and excessive side-to-side moment. The intent of this Safety Directive (SD-101722-A) is to inspect the location of the side plate and bushing assemblies to verify if corrective action is required.

ASSEMBLIES AND PARTS:

Part Number	Description	Quantity	Alternate	
			Part Number	Description
ICA009706	BUSHING, NITRONIC 60, PIVOT, RUDDER PEDAL	2		
ICA010073	GUIDE SIDE PLATE, RUDDER PEDAL	2		

IF APPLICABLE, SERVICE KITS:

NONE



2141 ICON Way, Vacaville, CA 95688 - Tel: 707.564.4000 – www.iconaircraft.com

SAFETY DIRECTIVE/ALERT

SD-101722-A

INSTRUCTIONS:

It is permissible to disassemble the aircraft as required to permit accessibility, inspection, adjustment, maintenance, and repair in accordance with the latest release of the [ICON Aircraft Maintenance Manual](#).

- The pilot side and co-pilot side rudder pedal side plate and bussing assemblies shall be inspected.
- One or both sets of rudder pedals may be affected.

Special Tools/Fixtures/Test Equipment

- Borescope

PILOT AND CO-PILOT INSPECTION

1. Remove forward and aft floorboards, per ICON Aircraft Maintenance Manual
 - a. Remove Cockpit Floorboard
 - i. Lift up on the aft edge of each aft floorboard, separating the ball and socket fasteners, then lift up on the forward edge in a similar way. Remove the aft floorboard using care so as not to scratch anything.
 - ii. Lift on LH and RH legs of forward floorboard, separating the ball and socket fasteners.
 - iii. Slide the forward floorboard aft until it clears the pedal heel strike. Remove from aircraft.
2. Use borescope to verify position of the side plate bushing

NOTE: Figure 1 (below) shows the CORRECT side plate bushing location for A5 serial number ASN00001 to ASN00140. In the correct position, there should be no gaps between the pivot tube, retaining rings and side plates. Verify flanged bushings are pressed into guide plates from the inboard side. The flanges of bushings (blue in reference figures) should be visible when inspection the inner portion of pedal assembly

Figure 2 (below) shows the CORRECT side plate bushing location for A5 serial number ASN00141 and higher. In the correct position, there should be no gaps between the pivot tube, retaining rings and side plates. Verify flanged bushings are pressed into guide plates from the inboard side. The flanges of bushings (blue in reference figures) should be visible when inspection the inner portion of pedal assembly

Figure 3 (below) shows the IMPROPER side plate bushing location. An improper position is indicated by a gap between the pivot tube, retaining rings and side plates. Additionally, if the lip of either of the bushings is not visible, then the side plate has been improperly installed.

3. IF the side plate bushing is in the CORRECT position, then no further action is required and proceed to step 3.
4. IF the side plate bushing is in the IMPROPER location, then the side plate and bushing assembly



2141 ICON Way, Vacaville, CA 95688 - Tel: 707.564.4000 – www.iconaircraft.com

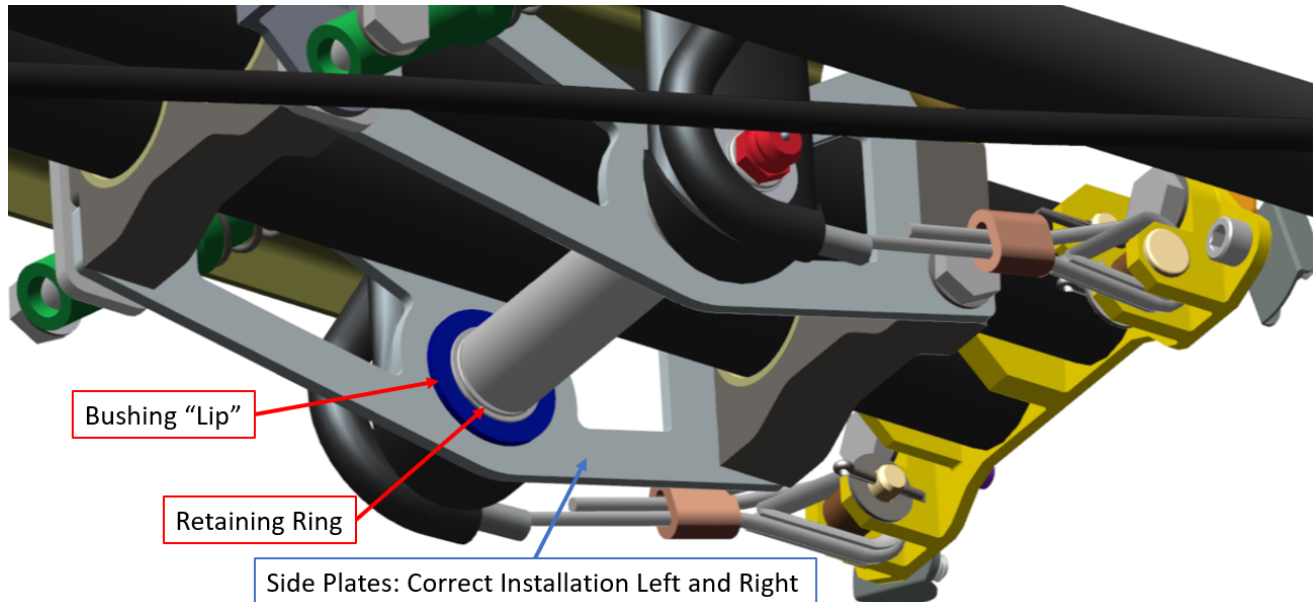
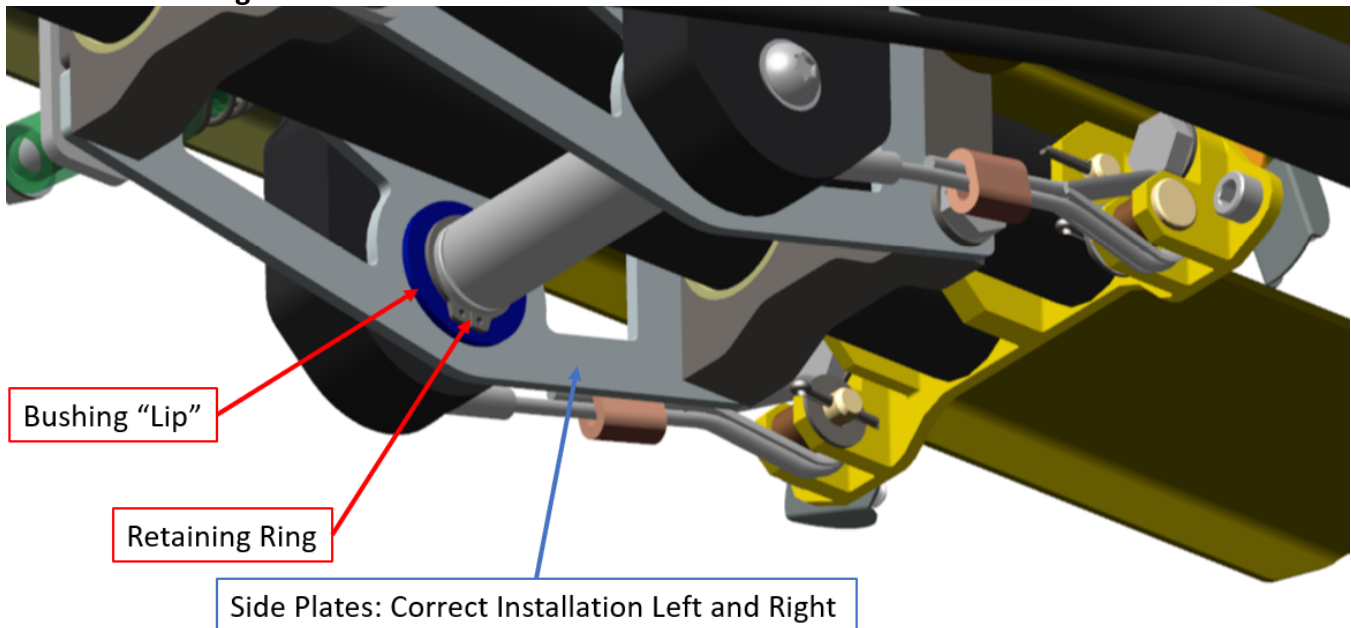
SAFETY DIRECTIVE/ALERT

SD-101722-A

must be removed and repositioned to the CORRECT position. Contact ICON Aircraft for further guidance and support.

NOTE: If the side plate bushing is verified to be in the IMPROPER position, the aircraft **shall not be flown**. Contact ICON Aircraft for further guidance and support

5. Install the forward and aft floorboards, per ICON Aircraft Maintenance Manual
 - a. Install Cockpit Floorboard
 - i. Guide the middle “tongue” of the forward floorboard through the gap under the heel strike.
 - ii. Slide floorboard forward and insert middle “tongue” of forward into cutout in floorboard support bracket, while lifting LH and RH legs to clear ball and socket fasteners.
 - iii. Press down on LH and RH legs of floorboard to engage ball and socket fasteners.
 - iv. Place the Aft Floorboard into position, align the four ball socket fasteners, and press down until the balls engage the sockets.

SAFETY DIRECTIVE/ALERT**SD-101722-A****ASN00001 to ASN00140***Figure 1 ASN 001 to ASN 140 Side Plates***ASN00140 and Higher***Figure 2 ASN 140 and Higher Side Plates*



2141 ICON Way, Vacaville, CA 95688 - Tel: 707.564.4000 – www.iconaircraft.com

SAFETY DIRECTIVE/ALERT

SD-101722-A

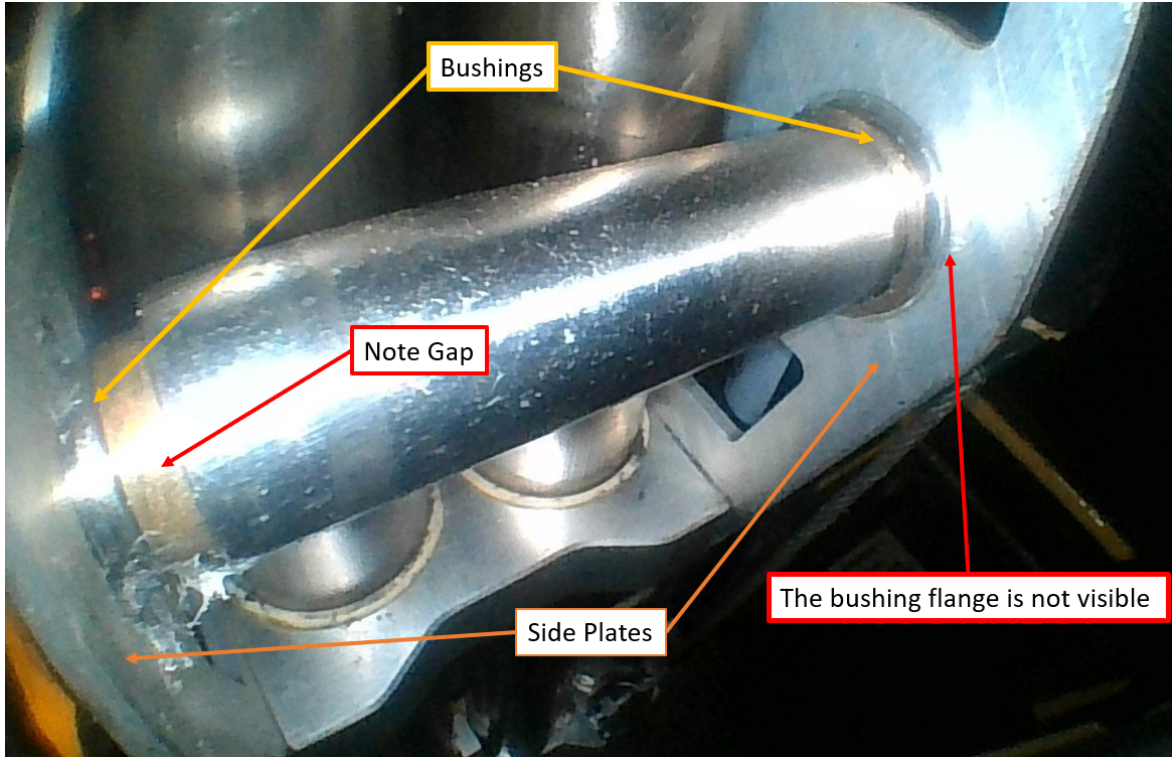


Figure 3 IMPROPER Side Plate Bushing Position

Make the following logbook entry:

“I hereby certify the inspection has been completed in accordance with this Safety Directive/Alert and all the referenced documents. Potentially unclear procedures have been clarified with ICON Aircraft. The corrective action of Safety Directive/Alert SD-101722-A-A (Rudder Pedal Bracket Installation) has been complied with (ref. FAA Exemption 10829B)”.

If you have questions, comments, or concerns about this Safety Directive/Alert and/or if you are no longer owner/operator of this aircraft, please forward this information to the present owner/operator and notify ICON Aircraft at:

ICON Aircraft
2141 ICON Way
Vacaville, CA 95688
(855) FLY-ICON or (707) 564-4000
support@iconaircraft.com

Please include the aircraft registration number, serial number, your name, and if known the contact information of the new owner/operator.